



#### Legend



Hand Auger Location



Sub-area Boundary

Source: Department of Lands Six Viewer, accessed October 2008

0 150  
Approximate Scale Metres



CLIENTS | PEOPLE | PERFORMANCE

Phase 2 Contamination Assessment  
Marsden Park Industrial Precinct  
Marsden Park Developments Pty Ltd

## Sampling Locations - Adjacent piggery

date | November 2008

job no | 21-17717  
file ref | 21-17717P2 - 5e.cdr

**Figure 5e**



#### Legend



Hand Auger Location



Surface water sampling location



Sub-area Boundary

Source: Department of Lands Six Viewer, accessed October 2008

0 150  
Approximate Scale Metres



CLIENTS | PEOPLE | PERFORMANCE

Phase 2 Contamination Assessment  
Marsden Park Industrial Precinct  
Marsden Park Developments Pty Ltd

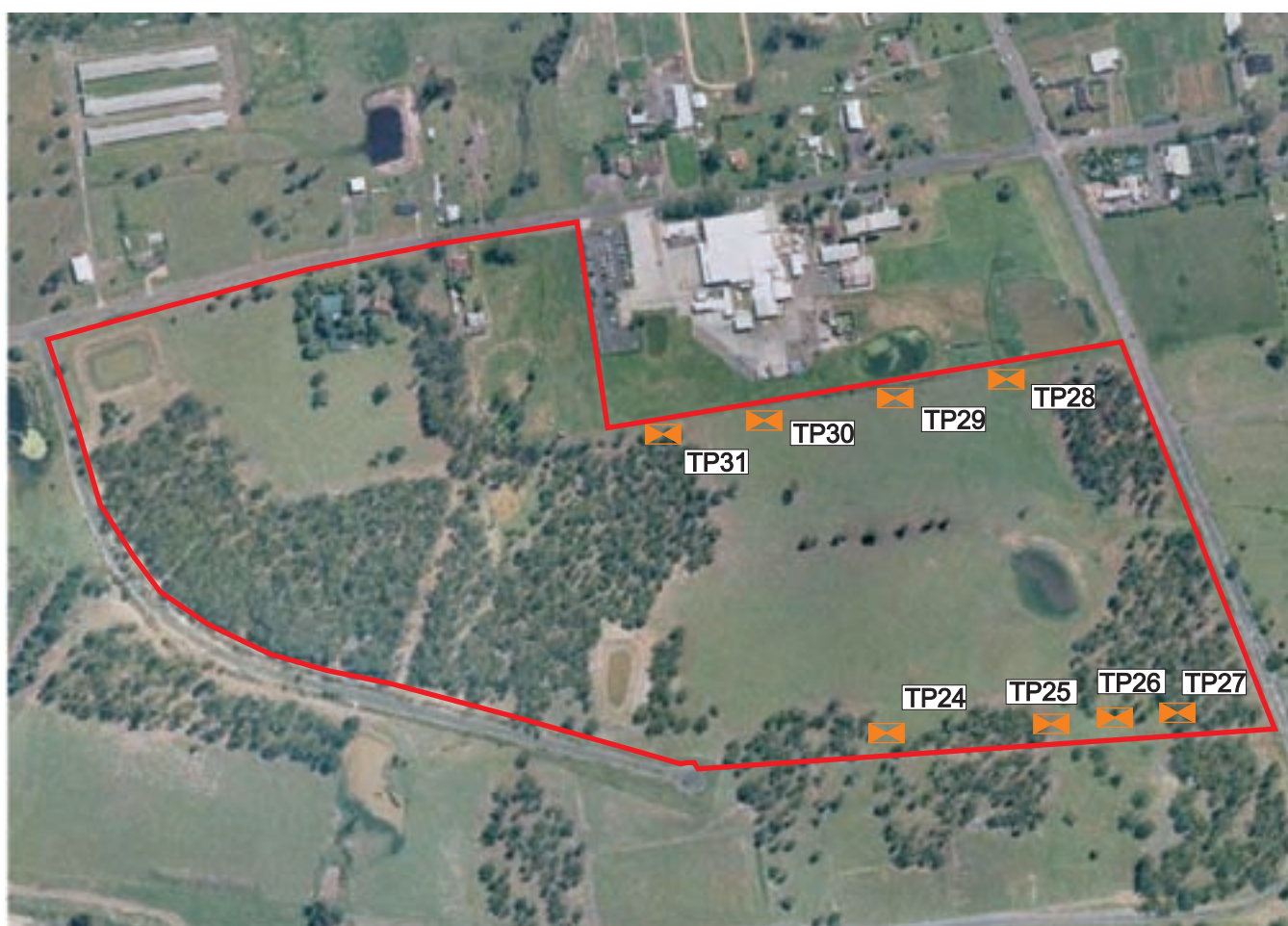
### Sampling Locations - Piggery

date | November 2008

job no | 21-17717  
file ref | 21-17717P2 - 5f.cdr

**Figure 5f**





# Legend



Test Pit Location



Sub-area Boundary



Source: Department of Lands Six Viewer, accessed October 2008



CLIENTS | PEOPLE | PERFORMANCE

Phase 2 Contamination Assessment  
Marsden Park Industrial Precinct  
Marsden Park Developments Pty Ltd

## Sampling Locations - Adjacent Steggles and Council Depot

date | November 2008

job no | 21-17717  
file ref | 21-17717P2 - 5g.cdr

**Figure 5g**



#### Legend



Monitoring Well Location



Sub-area Boundary

0 100

Approximate Scale Metres

Source: Department of Lands Six Viewer, accessed October 2008



CLIENTS | PEOPLE | PERFORMANCE

Phase 2 Contamination Assessment  
Marsden Park Industrial Precinct  
Marsden Park Developments Pty Ltd

## Sampling Locations - Machining Business

date | November 2008

job no | 21-17717  
file ref | 21-17717P2 - 5h.cdr

**Figure 5h**





#### Legend



Test Pit Location



Sub-area Boundary

Source: Department of Lands Six Viewer, accessed October 2008

0 25 50  
Approximate Scale Metres



CLIENTS | PEOPLE | PERFORMANCE

Phase 2 Contamination Assessment  
Marsden Park Industrial Precinct  
Marsden Park Developments Pty Ltd

## Sampling Locations - Bells Creek Nursery

date | November 2008

job no | 21-17717  
file ref | 21-17717P2 - 5i.cdr

**Figure 5i**



## Legend



Hand Auger Location



Sub-area Boundary

0 25

Approximate Scale Metres

Source: Department of Lands Six Viewer, accessed October 2008



CLIENTS | PEOPLE | PERFORMANCE

Phase 2 Contamination Assessment  
Marsden Park Industrial Precinct  
Marsden Park Developments Pty Ltd

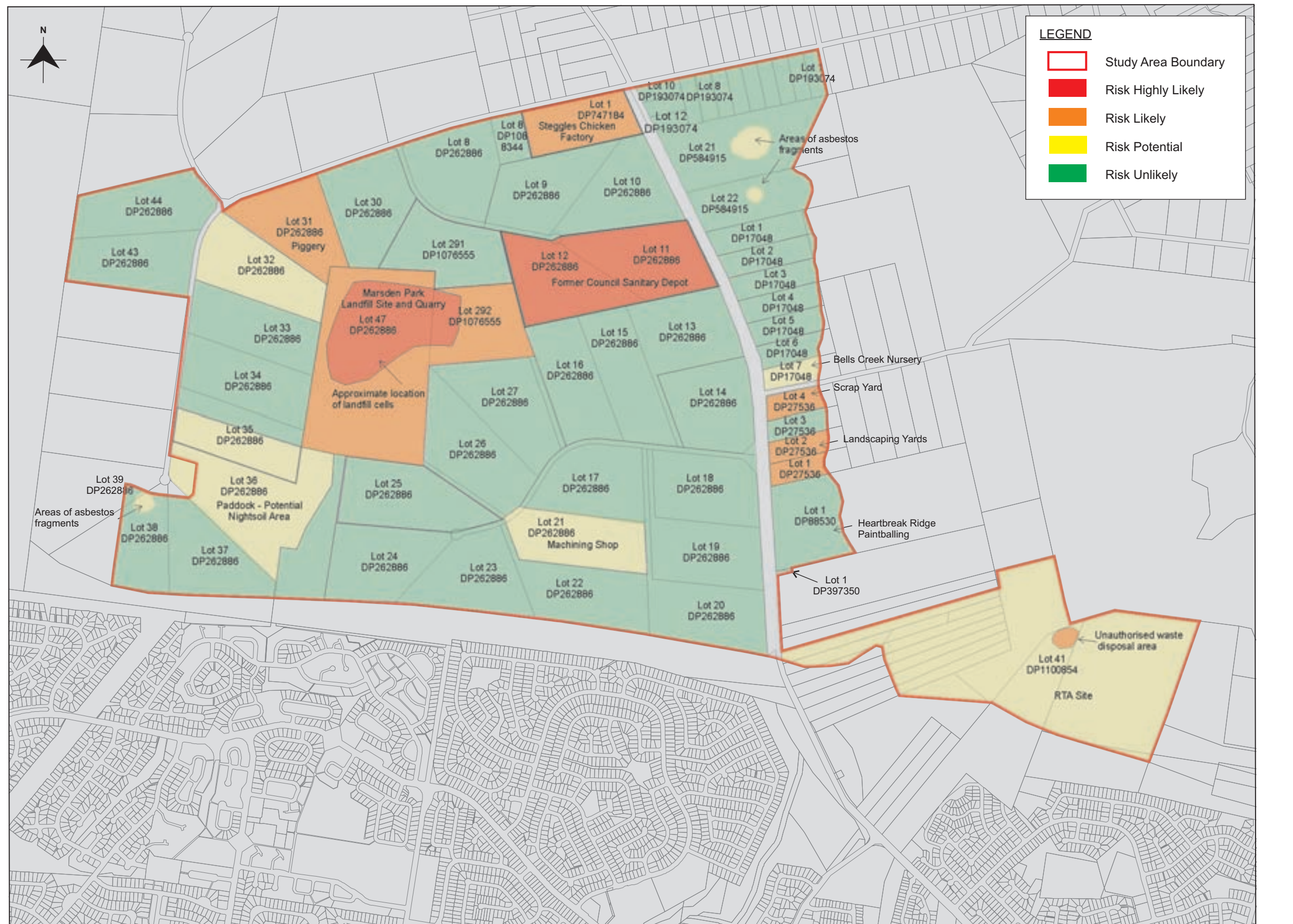
## Sampling Locations - Paintball site

date | November 2008

job no | 21-17717  
file ref | 21-17717P2 - 5j.cdr

**Figure 5j**





**GHD Note:** Not all areas of the Site have been accessed therefore some risk rankings may be subject to change

**Source:** Growth Centres Commission

0 0.2 0.4  
Scale Kilometres